

Time for enriching your life
KOMEF

KOMEF brings you a happy world,
the value of a healthy life.

The nature dreams of our **happiness**.

Wishes that we ourselves have **hope** for tomorrow,
and provide a greater **love**.

Sometimes plans the **future** together next to us, and feels
pride in doing so.

And generously shares more than anybody for our **health**.

Realizing the value given to us by nature through high-class treatment,
KOMEF will learn from the nature until everyone in the world becomes
healthy.

Contents

02	04	06	12	24	28	30
Happiness KOMEF Gallery	Hope KOMEF Intro	Love Our exclusive specialty	Future Center Intro	Pride Checkup Program	Health KOMEF Roadmap	Sharing Medical Staff Intro



Komef Gallery

KOMEF shall become the health itself where you can always take a break.



David Gerstein, Morning Run, 2008, Hand painted laser cut steel, 42 x 105cm

To love someone is to identify yourself with that someone
-Aristotle-



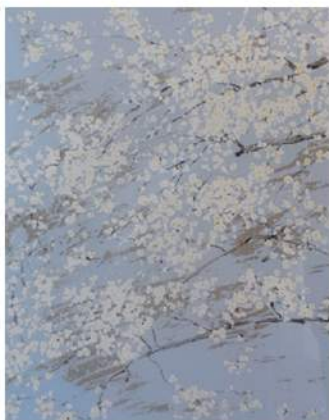
양종용, 그릇 이야기, 2013, 캔퍼스에 유채, 97 x 97cm



임근우, 2012, 고고학적 기념도, 캔버스에 혼합재료, 45 x 45cm



Marc Quinn, Untitled 09, from Winter Garden series, 2004, Pigment print, 84 x 124cm



차규선, 꽃꽃, 2009, 종이에 석판화, 46 x 36cm



Catherine Nelson, Danube Lilies II, 2012, Pigment print, 150 x 150cm



양종용, 제우스, 2013, 캔퍼스에 유채, 116 x 91cm



Marc Quinn, At the far edges of the universe4, 2010, Pigment print, 70 x 104cm



채성원, 익명의 땅, 2012, 천에 문물모수 후 흙과 수묵, 96 x 120cm



한기창, 피프스의 정원, 2009, 엑스선필름, LED, 혼합재료, 120 x 46cm



Introduction

Mission Promoting healthy lives of mankind through high-class treatment and love

Vision

- 1_ Provide cutting-edge medical technology
- 2_ Care for clients like family
- 3_ Inspire self-respect of staff and employee
- 4_ Cooperate with partners and local community

Value Love the staff and employee, clients, and neighbors.

Slogan Healthy people, healthy world

History

2005.01.14 Medical corporation KOMEF founded

2005.02.28 Medical corporation KOMEF establishment approval

2005.03.04 Medical corporation KOMEF Prime Hospital established

2007.02.12 Regular membership at Korean Association for Quality Assurance for Clinical Laboratory

2012.05.31 Medical corporation KOMEF Yeouido General checkup Center established

2013.01.14 Medical corporation KOMEF IFC General checkup Center established

2014.06.18 Medical corporation KOMEF IFC Outpatient Center established



Our Uniqueness

01

SMART Checkup System

One Key Solution(RFID)

Medical exam table, locker key, and checkup file according to registration, locker, and checkup are all implemented in a single tag

Checkup progress monitoring

Monitoring of checkup status and waiting status of the recipient

Central Control Service

Analyze checkup progress for efficient operation

02

Diagnosis by Cutting-Edge Medical Equipment

- Full-body cancer PET-CT operation
- high-resolution latest MRI introduction
- First in the country ABVS 3D (breast auto 3D scan) adopted
- low-dose 128 channel CT adopted
- Most expensive ·high-resolution PHILIPS IU22, SIEMENS 200 ultrasound
- high-resolution HDTV-grade resolution electronic gastroscope Gif-H260
- colonoscope CF-H2 · 60A adopted



03

General Medical Information System

Each checkup, OCS, EMR, PACS system integration EMR(electronic chart)

Paperless checkup, increased reliability for test results

PACS : real-time media data saving for zero error from data input

CTI : specialized call center system introduced for definite 1:1 interview

Shortened waiting time: linkage with RFID to minimize checkup process time



04

Eco-Healing General Checkup Center Implementing Dulle-Gil

You get to walk on Dulle-Gil through checkup, which makes you feel at peace as if being in the nature, and also helps with natural healing factor as it is made of environment-friendly materials.



Our Uniqueness

05

Medical Radiation Reduction and Infection Management

BISMUTH

Protects the client's eyes and thyroid from radiation when shooting medical image.
The radiation amount generated from existing special medical equipment is dramatically reduced so that checkup can be conducted with a lower radiation amount (0.6 mSv for lung CT) than the natural radiation amount (2.4mSv).

FORCEPS

This is the instrument used to remove tissue for endoscope test, and we conduct thorough infection management by using each one only once.

06

Client Convenience Reservation System

Strict reservation system through reservation of appropriate capacity allows for quick and comfortable checkup.

Quick Checkup Result Notice

- Personal checkups can have the results quickly through consultation on the very day and corporate checkups within a week.
- You can have the checkup results quickly by email and check your results anytime and anywhere.



07

TLIA System Construction

- Barcode registration of specimens, automatic division, analytic data automated interface allows for accurate and quick results.
- CLIA (Chemiluminescence Immuno Assay) test allows for the best accurate results and fastest analysis.



08

Mobile Personal Medical Information HESEL Release!

Medical imaging information is stored on the mobile phone

Hesel is an APP for you to manage your medical imaging information yourself, allowing for more accurate health management and a quick handling based on the saved medical information in case of an emergency.



Chest CT



Endoscope Imaging



Ultrasound Imaging



Chest X-ray

Our Uniqueness

09

Designated Hospital for Special Health Checkup

KOMEF is a designated hospital for special health checkup, striving for prevention of diseases of laborers working for tasks exposed to noise, dust, harmful chemical substance and such, and health protection and maintenance.

10

Specialized After-Care Service

We offer perfect after-care service through prescription and treatment for patients with existing diseases, 3rd treatment institution linkage service for patients with existing medical opinions, and tracking management service per stage for patients with existing medical opinions, along with various health contents services.

On-The-Go Family Doctor Service

Specialists and nurses visit themselves to discuss the results and provide on-site health lectures as the treatment service for special clients.



11

Conscious Sedation Colonoscopy Safety System

Central Oxygen Supply System

In case of an emergency during checkup, oxygen can be quickly supplied so that you can receive endoscopy test safely.

Sleep Monitoring System

This system measures ECG, blood pressure, and oxygen saturation level (SpO2) and generates the alarm automatically in case of an emergency for thorough management of apnoea clients.



12

Cafeteria Well-Being Porridge

You can have a break in a clean space with comfortable services.

For the clients who visited the checkup center after fasting for a day for the health checkup, healthy well-being porridges are served at the cafeteria in the center after all checkup is over.

Specialized Imaging Center

128
channel

CT

Computed Tomography

This checkup method shows the structure and lesions more clearly than the simple X-ray imaging so that it is the basic method for cases where lesion is expected in most organs and diseases and precision checkup is required. Especially, low-dose 128 channels were introduced to reduce the radiation amount.



Provides high-resolution images with 128 channels


PHILIPS Ingenuity 128 channel CT

48
Crystal

PET-CT

Positron Emission Tomography

PET-CT is a checkup method which adds CT images providing anatomical images, improving the qualities and diagnosis rates of the images, and allows for full-body scan with a single shooting so as to reduce the checkup time drastically. It is used for early cancer detection, cancer distribution diagnosis, and cancer treatment plan.

A doctor in a white lab coat is adjusting a patient's head inside an MRI machine. The patient is lying down, wearing a pink patterned gown and a white headrest. The MRI machine is a large, grey, cylindrical structure. The doctor's hand is visible, touching the patient's head. The background is a plain, light-colored wall.

Delicate and thorough checkup take
responsibility for your health.

M.R.I

Magnetic Resonance Imaging

MRI is a checkup method which is free from the concern of radiation exposure unlike the existing X-ray imaging or CT, allowing for better distinction between soft tissues and clearer observation of small structures for various functional checkup.



Female Checkup Center

ABVS

Automated Breast Volume Scanner, ABVS

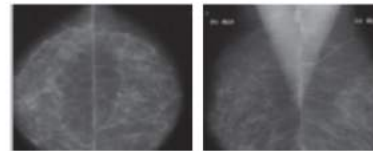
The dense breasts, appearing often in Asian women, are accurately diagnosed using 3D high-frequency breast ultrasound, and with a single scan, detailed information from papilla to breast wall such as cross-section, longitudinal section, radial section, and perpendicular radial section can be provided with this breast checkup method. This is a high-priced cutting-edge checkup equipment installed in only 8 places including domestic large-sized general hospitals (as of 2014).




MAMMO, the cutting-edge equipment showing the overall breast internal tissue through X-ray checkup on breast tissues

Breast X-ray imaging

This is the most ideal checkup method for early cancer detection as the most sensitive checkup for discovery of breast cancer which has not yet been 'palpated' with 90~95% of accuracy and is able to detect tumor of about 5mm in size.



A photograph of three women of different ages practicing Tai Chi outdoors. In the foreground, a young woman with dark hair in a braid, wearing a blue tank top and white pants, has her arms extended horizontally to the sides. Behind her, an older woman with grey hair, wearing a white long-sleeved shirt and a purple shawl, also has her arms extended. In the background, another woman is visible, also in a similar pose. The background is a bright, slightly cloudy sky. The text "Realizing the technology for women's happy tomorrow." is overlaid on the left side of the image.

Realizing the technology for women's
happy tomorrow.

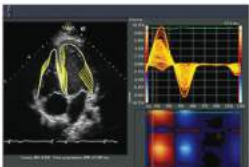
Ultrasound Center

Able to shoot deeper than the
existing 3D method
Siemens Acuson SC2000



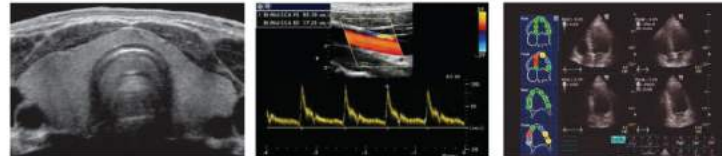
Heart Ultrasound

This is the volume imaging ultrasound system introduced for new diagnosis reliability criteria. The test accuracy is improved, the checkup time is reduced, and even deeper imaging can be obtained compared to existing 3D transducers. It can produce imaging not only for adults but also for children, and provide safe clinical imaging for advanced cardiovascular utilization such as transesophagus or blood vessels.



Special Ultrasound

This is the checkup method which introduces high-performance ultrasound equipment used for treatment purposes surpassing diagnostic ultrasound equipment for checkup epigaster, thyroid, pelvis, prostate, carotid, breast, heart and such.





Highest-class model among ultrasound equipment PHILIPS iU22 xMATRIX Ultrasound System

With the best projection ability Siemens Acuson S2000



Digestive Center

High-Resolution HDTV Stomach/Colon

The HDTV type with twice as many scanning lines as the existing endoscopy equipment so as to improve the image quality dramatically, allowing for delicate diagnosis from microvessels to mucosa. The short recovery period allows for quick return to daily life. The reduced pain has lowered the frequency of painkiller use, and as polyps can be removed without ventrotomy, you can have the removal operation without scars.



Endoscopy Infection Management System

E.O Gas(Ethylene Oxide Gas)Installation

This chemical sterilization method uses the toxic gas to remove pathogens and microbes on the medical equipment.



Suction Central Pipe System

The enhanced suction pressure makes it easy to remove foreign substance from the endoscope and secure the visual field for endoscope, and it has no noise and keeps the surrounding environment clean during checkup.

Full-Automatic Endoscope Cleaning Room Operation



소화기센터
Digestive Disease Center

VIP 진료실 1

INFORMATION



Diagnostic Checkup Medical Center

Biochemical Checkup

With the serum coming from the examinee as the specimen, automatic chemical equipment and such is used to test liver function, kidney function, electrolyte, blood lipid, cardiovascular, pancreas, diabetes, arthritis, well-being life and such.



Immunoserological Checkup

The antigen/antibody reaction in blood is used to test hepatitis B antigen, hepatitis B antibody, hepatitis A, tumor indicator and such.



Hematological Checkup

Along with a series of tests related to blood cells and coagulation, the internal distribution, structure, and function of blood corpuscle and precursor cells distributed in bone marrows are tested.


- checkup leukemia, thrombopenia, hemostasis action, anemia blood type and such related diseases

Urino-Chemical Checkup

The internal secretions of urine and feces are collected to test occult blood, bilirubin, ketone body, glucose, protein, and leukocyte properties and such.

- Check for existence of kidney disease anomaly



A close-up photograph of a laboratory setting. A hand wearing a blue nitrile glove is placing a clear plastic test tube with a yellow liquid inside into a white rack. The rack is part of a larger white laboratory instrument, possibly a centrifuge or a diagnostic analyzer. Several other test tubes are already in the rack. The background shows more of the instrument and some blurred laboratory equipment. The lighting is bright and clinical.

For your future
Diagnose your today

Outpatient Treatment Center

From Diagnosis to Treatment Customized One-Stop Service KOMEF IFC Outpatient Treatment Center

KOMEF provides thorough and precise diagnosis results, and in case of major diseases, customized one-stop service is provided with operations or procedures immediately available at cooperating hospitals specializing in each disease.



One-Stop from
Reservation to
Result Consultation

Reservation > Treatment > Checkup > Result Consultation
You can easily conduct all of them in one place.

Pleasant and
Comfortable
Facility

Reservation registration has minimized
the waiting time, and the waiting room with
soft music is fully prepared for comfortable
treatment.

Treatment
Center
Accompanied by
Checkup Center

The background of the infographic is a close-up photograph of a smiling female doctor in a white lab coat with a stethoscope around her neck. To the left of the doctor, there is a central orange circle with the text 'One Stop'. Five grey circles are connected to this central circle by thin lines, each containing text about the medical services. The circles are arranged in a semi-circle around the 'One Stop' circle. The text in the circles is as follows: 1. Top-left: 'Treatment Center Accompanied by Checkup Center'. 2. Top-right: 'The Only Outpatient Treatment Center in IFC Mall'. 3. Bottom-right: 'Medical Staff with Rich Clinical Experience'. 4. Bottom-left: 'Cooperating Hospitals'. 5. Middle-left: 'After treatment at the IFC General Checkup Center, you can get tested with cutting-edge equipment if precision checkup is needed.' Below the 'Cooperating Hospitals' circle, there is a list of hospital names.

After treatment at the IFC
General Checkup Center, you
can get tested with cutting-edge equipment if
precision checkup is needed.

**One
Stop**

The Only
Outpatient
Treatment
Center in
IFC Mall

This is the only place where
outpatient treatment is
available within the IFC Mall.

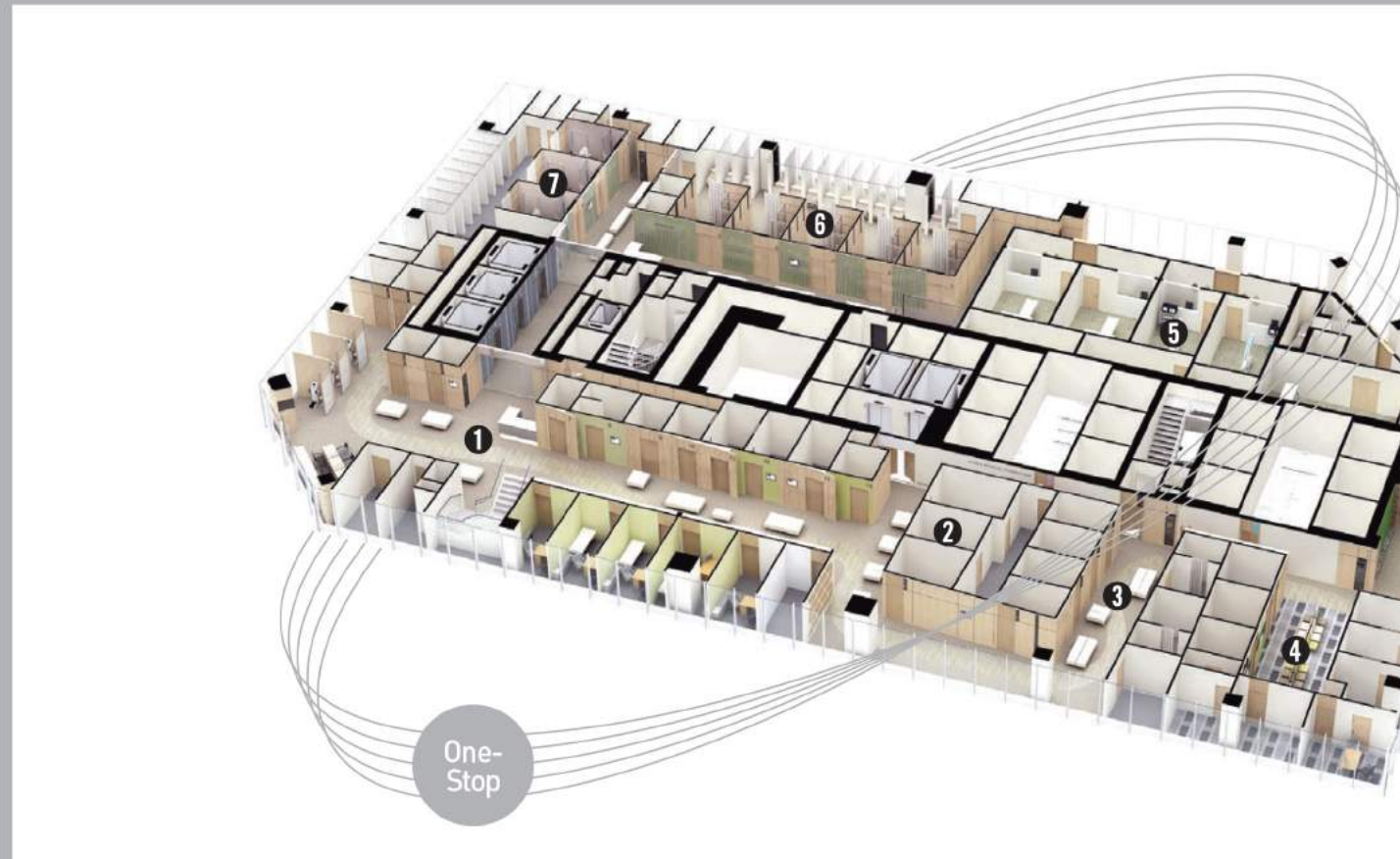
Medical Staff
with Rich
Clinical
Experience

The medical staff consists of specialists with
rich clinical experience spanning from
internal medicine to surgery,
gastroenterology, family medicine,
diagnostic radiology, imaging radiology and such.

Cooperating
Hospitals

SNU Hospital, Seoul Asan Hospital,
Severance Hospital, Hanyang University
Hospital, Samseong Medical Center, Ewha
Womans Univ. Mok-dong Hospital

KOMEF Roadmap



① General checkup center

Basic checkup room, eyeground/eye pressure, lung function, ECG, artery hardening, bone density, psychological evaluation, injection room, treatment room

② Imaging center

Thorax X-ray shooting room, heart ultrasound room, upper gastrointestinal room

③ Ultrasound center

Ultrasound checkup room

④ Female checkup center

ABVS(Automated Breast Volume Scanner), breast ultrasound room, breast X-ray imaging room, gynaecological checkup room

⑤ Precision imaging center

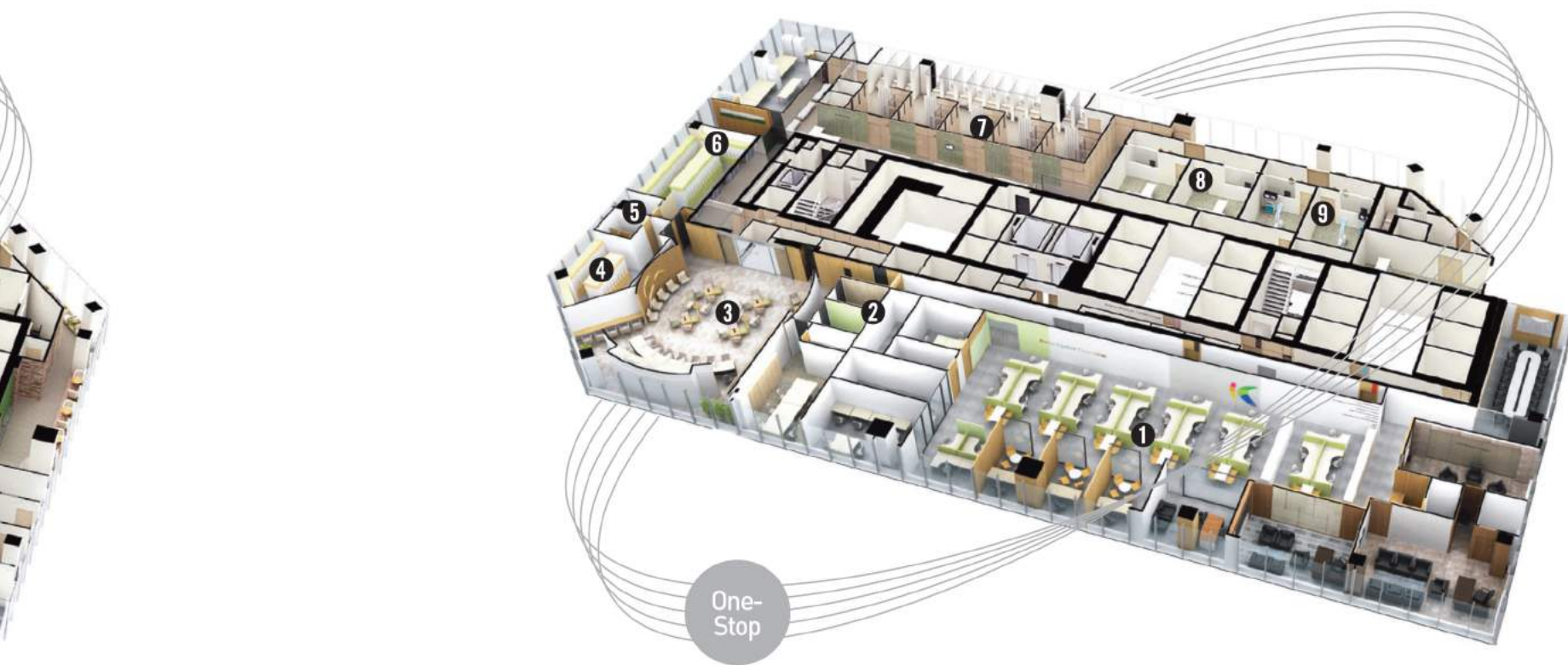
PET-CT, MRI, CT

⑥ Digestive system center

Gastroscopy center - Gastroscopy room

⑦ Digestive system center

Colonoscopy center - Colonoscopy room



① KOMEF headquarters

Headquarters with all of nature's health

② VIP dressing room (male/female)

Specialized space for special clients

③ Registration / lobby

Service space assisting with easy and fast treatment

④ Dressing room (female)

Optimal space guaranteeing privacy

⑤ Urine sample collection room

Increased client convenience close to the dressing room

⑥ Dressing room (male)

Optimal space guaranteeing privacy

⑦ Dental office

Dental health space managed by specialist medical staff

⑧ Cafeteria

Rest area for dining in nature

⑨ Outpatient Treatment Center

Customized one-stop service from checkup to treatment



Specialized Medical Team





Medical staff
specialized in each
area for you.

Medical Staff Intro

Hyo-Sang Kim, Director_ Gastroenterology specialist / Samsung Seoul Hospital Full-time internal medicine doctor / Sungkyunkwan Univ. Medical School gastroenterology visiting professor / Ewha Womans Univ. Mok-dong Hospital family medicine visiting professor

Im-Won Jang, Standing Advisor_ Occupational environment medicine specialist / Catholic University of Korea doctor of medicine / Chung-Ang University Medical School professor / University of Michigan Graduate School of Public Health visiting professor / Chung-Ang University Dean of Medical School / Director of Korea Health Industry Development Institute / Won Magnolia Award (regarding laborer health management) / Authored 'Preventive Medicine and Public Health', 'College Public Health Studies'

Sun-Im Han, Assistant Director_ Radiology specialist / SNU Hospital radiology completed / Korea University Medical School professor / SNU Hospital radiology professor / Ajou University Hospital radiology professor / Soonchunhyang University Bucheon Hospital radiology professor

Jae-Won Shin, Assistant Director_ SNU Hospital family medicine completed / MBC medicine-specialization journalist / OBS TV Family Doctor MC / YTN News Head-On Match 'Health Stories in News' regular panel, etc.

Ji-Hyeon Kim_ Internal medicine specialist / Ewha Womans University Medical school / Hallym University Gangnam Samsung Hospital internal medicine division / Gangseo Mizmedi Hospital head of internal medicine division

Wung Nam_ Occupational environment medicine specialist / Yonsei University Medical School / Yeouido St. Mary's Hospital industrial medicine division / Catholic University of Korea Graduate School of Public Health master's degree / U.S. University of Michigan Graduate School of Public Health, health science GSS training / Korean Society of Occupational & Environmental Medicine regular member / Korean Association of Occupational and Environmental Clinics

Hee-Jeong Yu_ Family medicine specialist / Catholic University of Korea St. Mary Hospital family medicine division / Inha University Hospital family medicine division

Jeong-Mi Kang_ Family medicine specialist / Seoul Asan Hospital family medicine completed / Korean Association of Family Medicine regular member

Myeong-Jin Kim_ Family medicine specialist / Gangdong Sacred Heart Hospital family medicine division / Ewha Womans University Medical School visiting professor / Association of Family Medicine endoscopy instruction specialist / Korean Association of Family Medicine regular member / Korean Society of Digestive Endoscopy regular member / Korean Society of Gastrointestinal Endoscopy member

Jeong-Jin Lee_ Family medicine specialist / Ewha Womans University Medical School / Samsung Cheil Hospital family medicine division / Korean Society of Digestive Endoscopy regular member / Korean Academy of Clinical Geriatrics, geriatrics certified specialist

In-Seon Kang_ Family medicine specialist / Cha Hospital family medicine division / Korean Association of Family Medicine regular member / Korean Society of Gastrointestinal Endoscopy member

Su-Yeon Hong_ Family medicine specialist / Soonchunhyang University Bucheon Hospital / Korean Association of Family Medicine regular member / Family medicine division instruction specialist / Korean Association of Family Medicine gastroscopy certified doctor / Korean Academy of Clinical Geriatrics, geriatrics certified specialist / National Health Insurance Service life transition health diagnosis consulting doctor

Tae-Kyeong Yu_ Circulatory internal medicine specialist / Kyunghee Medical Center circulatory internal medicine / Kyunghee Medical Center circulatory internal medicine specialist / Echocardiography certified doctor / Korean Association of Internal Medicine regular member / Korean Society of Echocardiography regular member

Mi-Ah Yang_ Radiology specialist / Dankuk University Hospital radiology completed

Hee-Kyeong Park_ Surgery specialist / SNU Hospital surgery division / Korean Surgical Society lifetime member / Korean Society of Coloproctology lifetime member / Korean Surgical Society Gastroscopy Research Group founding member / Korean Society of Coloproctology colonoscopy specialist

Su-Chan Lim_ Surgery specialist / SNU Hospital surgery division / Korean Surgical Society lifetime member / Korean Society of Coloproctology lifetime member / Korean Surgical Society Gastroscopy Research Group member / Society of Coloproctology colonoscopy specialist / Korean College of helicobacter and upper Gastrointestinal Research lifetime member / Korean Society of Digestive Endoscopy regular member

Jae-Hee Ahn_ Endocrine internal medicine specialist / Korea university Ansan Hospital endocrine internal medicine professor / Korean Association of Internal Medicine regular member / Korean Diabetes Association associate member / Korean Endocrine Society regular member / Korean Association of Clinical Ultrasound regular member



4F, Two IFC, International Financial Center, 10, Gukjegeumyung-ro, Yeongdeungpo-gu, Seoul

Self-driving after conscious sedation endoscopy examination is like driving under influence (alcohol level 0.2%, sleeping state continued for at least 24 hours) and thus the potential risk of accident is very high. Make sure you use public transportation.

By
Car

Use IFC parking lot. / Enter gate 2 of the parking lot

- Park at the Green Zone on B5, B6, B7
- Use the elevator in front of the pillar 27.
- Switch to KOMEF-only elevator on GL (ground 1F)

By
Subway

Directly connected to IFC Mall L2 (B2F) through underground moving walk from exit no. 3 of Yeouido Station of subway line nos. 5 and 9. (takes about 10 minutes)

1. Follow the moving walk at the exit no. 3 of Yeouido Station of subway line nos. 5 and 9.
2. Enter the IFC entrance. (5 minutes from the station)
3. Take the escalator or the elevator to L1.
4. Enter the Two IFC entrance between ZARA and NINE WEST.
5. Take the escalator upstairs to Two IFC lobby D Take the KOMEF-only elevator to 5F.

By
Bus

Get off at Yeouido Transfer Center.

- Blue Bus / main road : 160, 162, 260, 261, 262, 230, 461, 600, 661, 662
- Green Bus / main road : 2012, 5615, 5618, 5623, 6513, 6623, 6628
- Red Bus / main road : 10, 10-1, 11-2, 83, 88, 301, 320, 2500, 3601, 5601, 8600

Healthy people,
healthy world



Time for enriching your life
KOMEF



4F, Two IFC, International Financial Center, 10, Gukjegeumyung-ro, Yeongdeungpo-gu, Seoul
| Main Phone 1544-2992